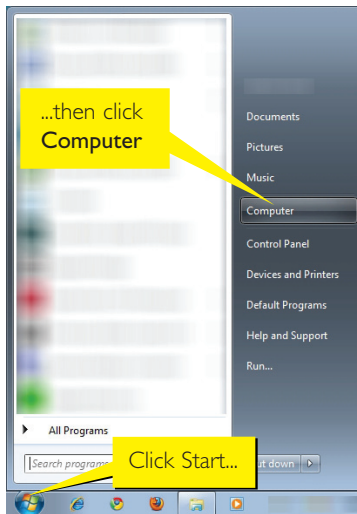


# Installing on Windows Vista®

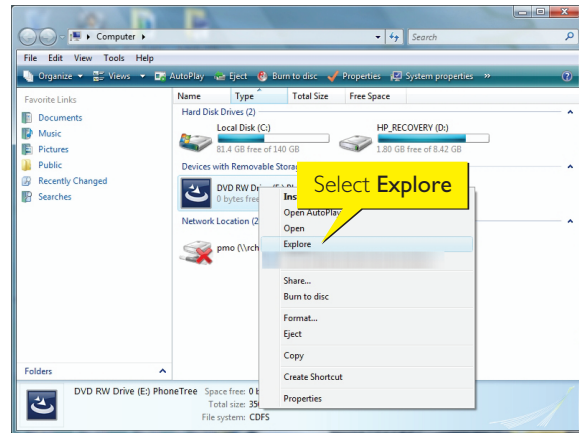
## For PhoneTree Patient Messaging, Dental Messaging, Veterinary Messaging and HealthWave™ models

**Important:** Before beginning installation of the PhoneTree system, ensure the intended Windows User Account is a part of the Local Administrative Group (required for installation and daily operation) and your version of the PhoneTree software is **6.8.150** or higher (see Installation CD label).

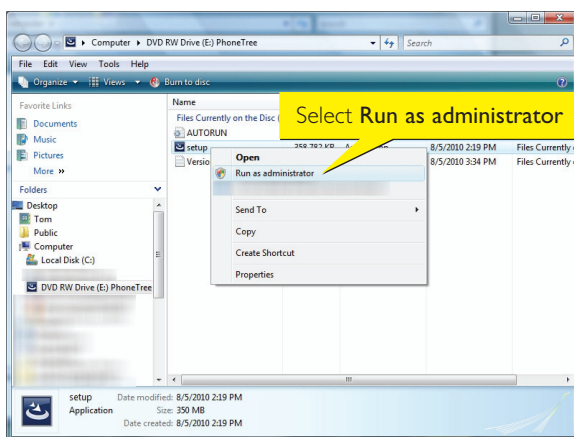
**Please Note:** This is a one-time process and will not be required in the future (unless you require re-installation).



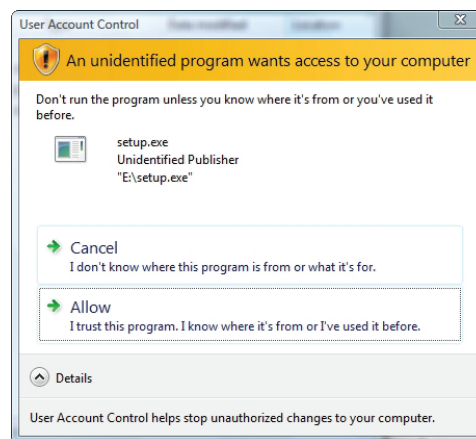
1. Insert the PhoneTree Installation CD in your computer's CD/DVD drive (if the Installer automatically starts, click **Cancel**). Next, click the Start button (Windows logo) and then click **Computer**.



2. Right-click on the CD/DVD drive and select **Explore**.



3. Right-click on setup.exe and select **Run as administrator**.



4. Windows User Account Control will prompt you for permission to proceed. If the file name is setup.exe and its location points to your CD/DVD drive (e.g., "E:\setup.exe"), click **Allow** (if it does not, click **Cancel** and repeat step 3).



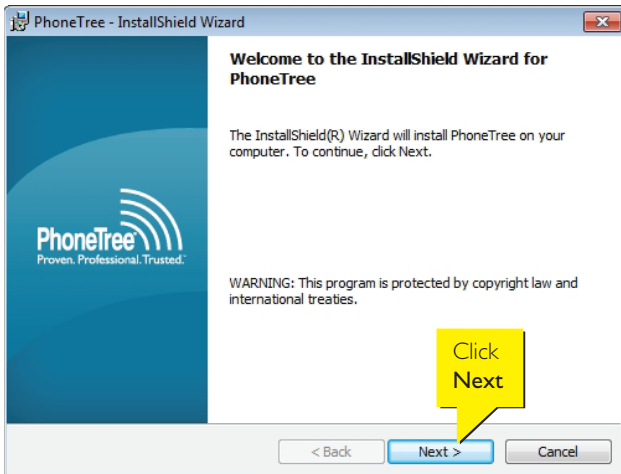
[phonetree.com/support](http://phonetree.com/support) • 800.555.0559 • [hcsupport@phonetree.com](mailto:hcsupport@phonetree.com)

PhoneTree®, Proven. Professional. Trusted.™, Patient Messaging™, Dental Messaging™, Veterinary Messaging™, and HealthWave™ are trademarks of Personal Communication Systems, Inc. © 2010 PCS  
Specifications subject to change without notice.

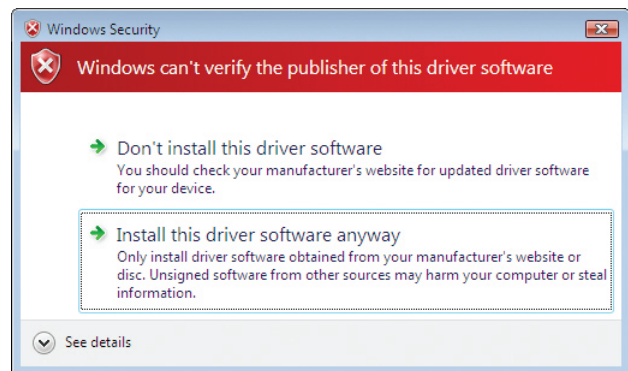
Revised 09/2010

page 1 of 3

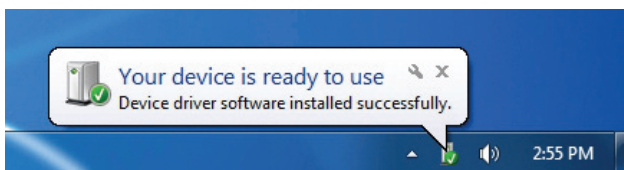
## Installing on Windows Vista®, continued



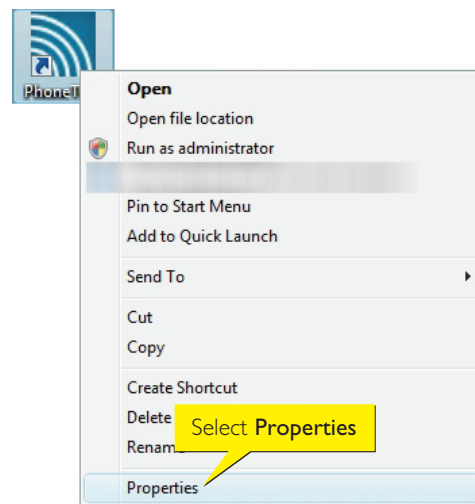
5. When the Installation screen appears, click **Next**. Once the installation is complete, connect the PhoneTree hardware to the computer (for Hosted models, please proceed to step 8).



6. You may receive the warning screen above. Be assured that it is 100% safe to install PhoneTree software on your computer. Click **Install this driver software anyway**.

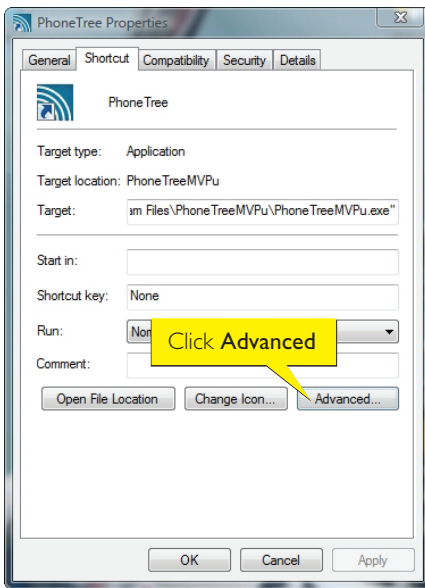


7. It may take a few minutes for Windows to recognize the PhoneTree device drivers. Once you see the above message appear, the PhoneTree hardware has been installed.

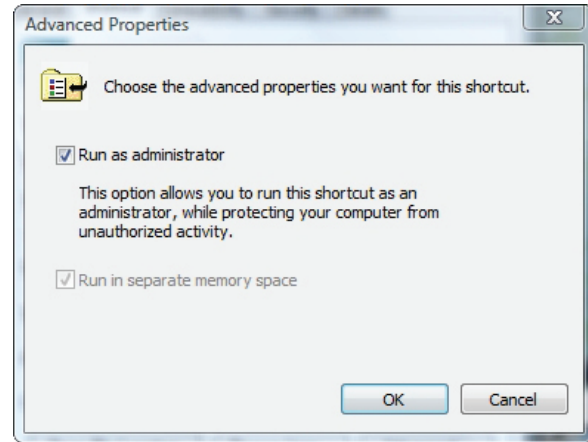


8. Next, *before* launching the PhoneTree software, right-click on the PhoneTree desktop shortcut icon and select **Properties**.

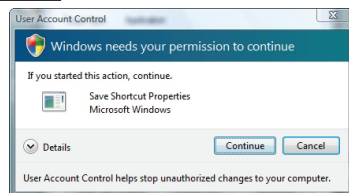
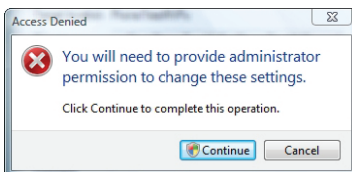
## Installing on Windows Vista®, continued



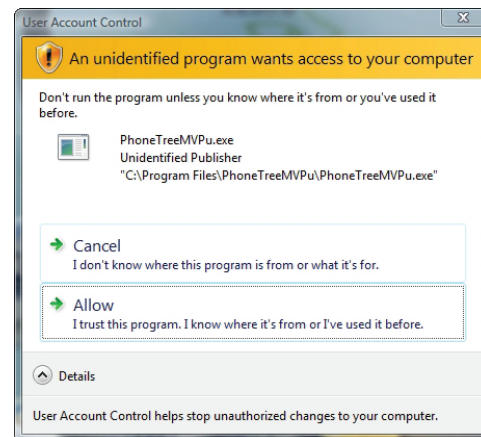
9. The PhoneTree Properties screen appears. Under the Shortcut tab, click **Advanced**.



10. Enable **Run as administrator**. Then, click **OK**. Back on the PhoneTree Properties screen, click **OK**.



11. Windows will prompt you for your permission to proceed. Click **Continue**. Then, User Account Control will prompt you for your permission to continue. Click **Continue**.



12. Launch the PhoneTree software. User Account Control will ask your permission to proceed. Click **Details**. If the file name is PhoneTreeMVPu.exe and its location points to "C:\Program Files\PhoneTreeMVPu\PhoneTreeMVPu.exe" or "C:\Program Files (x86)\PhoneTreeMVPu\PhoneTreeMVPu.exe," click **Allow** (if it does not, click **Cancel** and re-launch the PhoneTree software). Repeat this step each time the PhoneTree software is launched.

Windows Vista is either a registered trademark or trademark of Microsoft Corporation in the United States and/or other countries.



[phonetree.com/support](http://phonetree.com/support) • 800.555.0559 • [hcsupport@phonetree.com](mailto:hcsupport@phonetree.com)

PhoneTree®, Proven. Professional. Trusted.™, Patient Messaging™, Dental Messaging™, Veterinary Messaging™, and HealthWave™ are trademarks of Personal Communication Systems, Inc. © 2010 PCS Specifications subject to change without notice.

page 3 of 3

007-0009